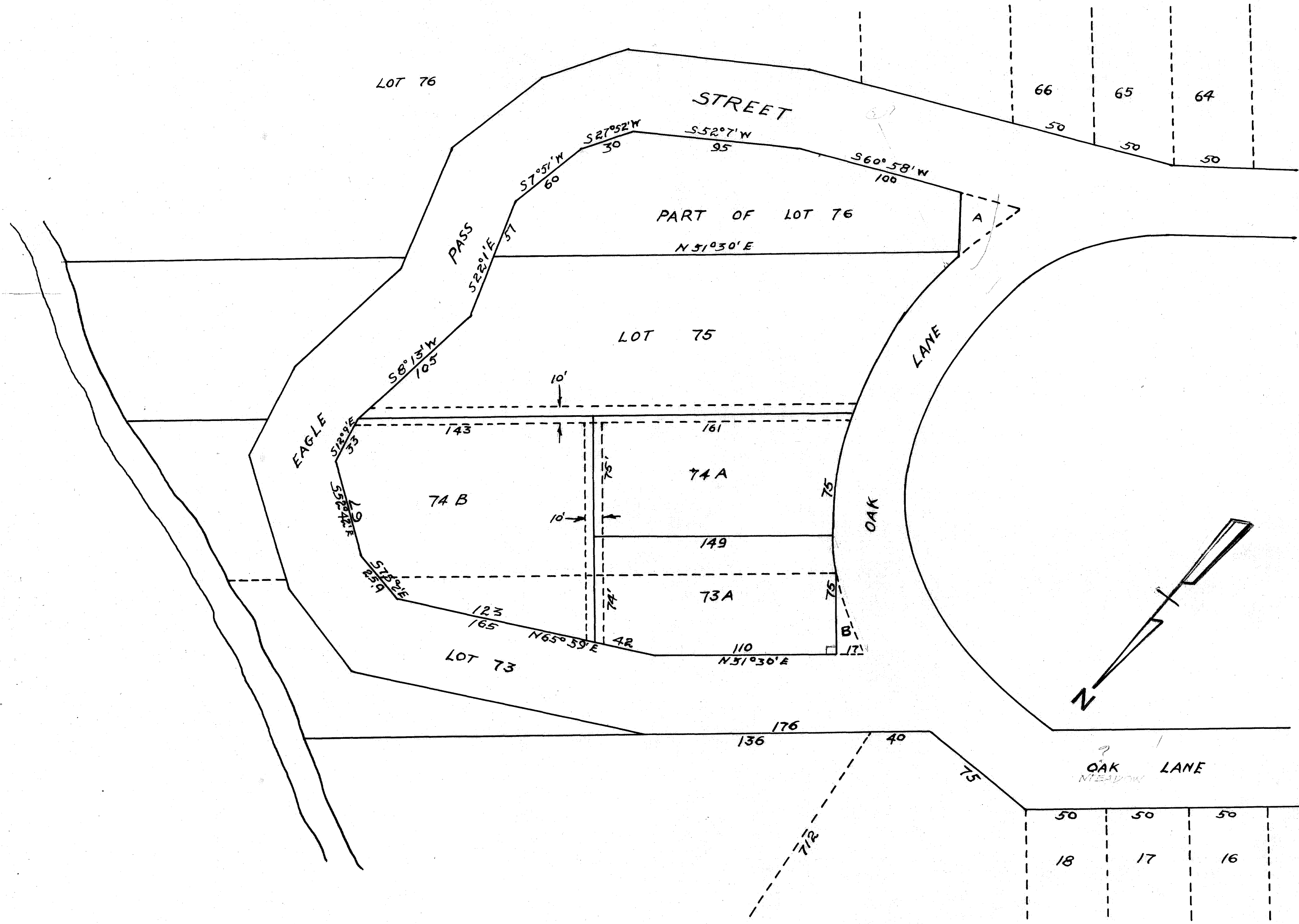


on base
as 12/16/02



RALPH GRIFFIN'S SUBDIVISION
 OF PART OF LOTS 73 & 74 OF
 MEADOWBROOK ADDITION TO THE
 CITY OF BRYAN
 TEXAS
 SCALE 1"=50' OCT. 19, 1948
 DIR 136 R610

Tax rolls call this
 still MEADOWBROOK!!